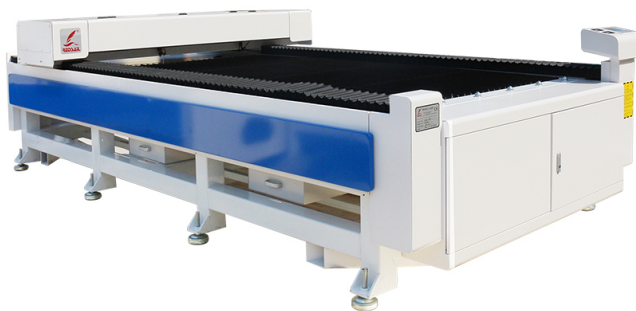


# WHY LASER ENGRAVED WOOD PICTURE FRAMES ARE THE BEST CHOICE

*Posted on 2024-09-14 by redsail*



Category: [Laser Engraver News](#)



# WHY LASER ENGRAVED WOOD PICTURE FRAMES ARE THE BEST CHOICE

## The Timeless Elegance of Wood

When it comes to picture frames, wood has always been a top choice due to its timeless elegance and natural beauty. Laser engraving takes it to another level by adding a personalized touch that makes your picture frames truly unique.

## Durability and Longevity

Wood picture frames, especially those that have been laser engraved, offer exceptional durability and longevity. The laser engraving process creates a deep and precise mark on the wood surface, making it resistant to fading, scratching, and other forms of wear and tear. This means your engraved picture frames will preserve their beauty for years to come, ensuring your cherished memories remain protected.

## Customization and Personalization

One of the main advantages of laser engraving on wood picture frames is the ability to customize and personalize them according to your preferences. Whether you want to add names, dates, quotes, or intricate designs, laser engraving allows for precise and detailed customization. This makes laser engraved wood picture frames an excellent choice for special occasions such as weddings, anniversaries, graduations, or any event that holds significant meaning to you or your loved ones.

## The Benefits of Laser Engraved Wood Picture Frames:

- **Unique and Personalized:** Laser engraving adds a personal touch that sets your picture frames apart from mass-produced alternatives.
- **Timeless and Elegant:** Wood picture frames have an inherent beauty that never goes out of style.
- **Durable and Long-lasting:** Laser engraving ensures your frames can withstand the test of time and preserve your memories for years to come.

## Frequently Asked Questions

### **Q: How does laser engraving work on wood picture frames?**

**A:** Laser engraving uses a concentrated beam of light to remove the surface layer of wood and create a permanent mark. This process is highly precise and allows for intricate designs and personalization.

### **Q: Can laser engraving be done on any type of wood?**

**A:** While laser engraving can be done on various types of wood, it is more effective on hardwoods such as oak, maple, cherry, or walnut. These woods provide a smoother surface for the laser to engrave on, resulting in a more defined and detailed finish.

### **Q: Are laser engraved wood picture frames more expensive?**

**A:** Laser engraved wood picture frames may be slightly more expensive than standard frames, but they offer exceptional value due to their durability, personalized craftsmanship, and unique appeal. The added sentimental value makes them well worth the investment.