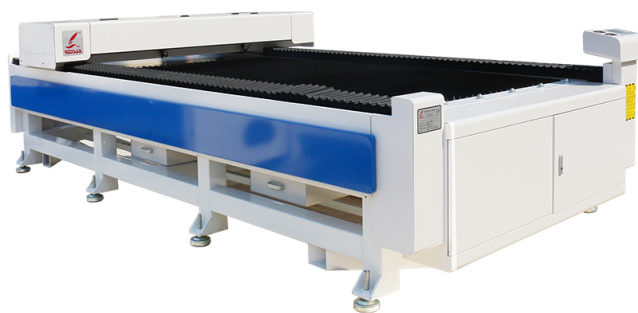


WHAT CAN THE FSL MUSE 3D AUTOFOCUS DESKTOP CO2 LASER CUTTER DO?

Posted on 2023-10-19 by redsail



Category: [Laser Cutter News](#)



Introduction:

The FSL Muse 3D Autofocus Desktop CO2 Laser Cutter is a versatile and user-friendly cutting and engraving machine. With its advanced features, it opens up a world of possibilities in various industries and hobbyist projects. This article will explore the capabilities and advantages of the FSL Muse 3D Autofocus Desktop CO2 Laser Cutter.

Overview of the FSL Muse 3D Autofocus Desktop CO2 Laser Cutter:

The FSL Muse 3D Autofocus Desktop CO2 Laser Cutter is a compact machine designed for personal and professional use. It combines cutting-edge technology with ease of use, making it suitable for both beginners and experienced users.

Features of the FSL Muse 3D Autofocus Desktop CO2 Laser Cutter:

1. Autofocus Capability:

The FSL Muse 3D Autofocus Desktop CO2 Laser Cutter is equipped with an autofocus system that ensures accurate laser operation at all times. This feature eliminates the need for manual focusing, saving time and effort.

2. Versatility in Material Selection:

With the FSL Muse 3D Autofocus Desktop CO2 Laser Cutter, you can work with a wide range of materials, including wood, acrylic, leather, fabric, cardboard, and more. Its versatility makes it ideal for various applications such as signage, jewelry making, model building, and prototyping.

3. 3D Engraving Capability:

Unlike traditional laser cutters, the FSL Muse 3D Autofocus Desktop CO2 Laser Cutter allows for 3D engraving. This means you can create intricate designs that add depth and dimension to your projects. Whether you want to engrave decorative patterns or emboss logos, this machine can achieve impressive 3D effects.

4. High-Quality Cutting and Engraving:

The FSL Muse 3D Autofocus Desktop CO2 Laser Cutter delivers precise and high-quality cutting and engraving results. Its 45W laser tube ensures clean lines and sharp details, allowing you to achieve professional-looking outcomes every time.

5. User-Friendly Interface:

The FSL Muse 3D Autofocus Desktop CO2 Laser Cutter features a user-friendly interface that simplifies the design and cutting process. Its software allows you to import designs, modify them, and control the laser settings with ease. Whether you are a beginner or an expert, navigating through the interface is intuitive and straightforward.

6. Compact Design:

The FSL Muse 3D Autofocus Desktop CO2 Laser Cutter is designed to fit comfortably on a desk or workbench. Its compact size ensures that it does not occupy much space and can be easily

transported if needed. This makes it suitable for individuals with limited workspace or those who need to use it in different locations.

7. Safe Operation:

Safety is a top priority when working with lasers. The FSL Muse 3D Autofocus Desktop CO2 Laser Cutter incorporates safety features such as a built-in smoke exhaust system, a water cooling system, and an emergency stop button. These features ensure that the machine operates safely and minimizes the risk of accidents.

How Does the FSL Muse 3D Autofocus Desktop CO2 Laser Cutter Work?

The FSL Muse 3D Autofocus Desktop CO2 Laser Cutter operates by directing a laser beam onto the material to be cut or engraved. The focused laser beam burns, melts, or vaporizes the material, creating precise cuts or marks. The autofocus system ensures that the laser maintains the correct focus distance throughout the process, resulting in accurate and detailed outputs.

Common Questions about the FSL Muse 3D Autofocus Desktop CO2 Laser Cutter:

1. Can the FSL Muse 3D Autofocus Desktop CO2 Laser Cutter cut through thick materials?

Yes, the FSL Muse 3D Autofocus Desktop CO2 Laser Cutter can cut through materials up to a certain thickness. However, the cutting depth depends on the type of material and the power of the laser.

Thicker materials may require multiple passes to achieve the desired result.

2. What file formats are compatible with the FSL Muse 3D Autofocus Desktop CO2 Laser Cutter?

The FSL Muse 3D Autofocus Desktop CO2 Laser Cutter is compatible with various file formats, including SVG, DXF, BMP, JPG, and PNG. This makes it easy to import existing designs or create new ones using popular design software.

3. Is it possible to engrave photographs with the FSL Muse 3D Autofocus Desktop CO2 Laser Cutter?

Yes, the FSL Muse 3D Autofocus Desktop CO2 Laser Cutter can engrave photographs. Using specialized software, you can convert an image into a format compatible with the machine and then engrave it onto the desired material. The laser cutter can reproduce intricate details, creating unique and personalized photo engravings.

4. Can the FSL Muse 3D Autofocus Desktop CO2 Laser Cutter be used for industrial purposes?

While the FSL Muse 3D Autofocus Desktop CO2 Laser Cutter is primarily designed for personal use, it can also be used for small-scale industrial applications. Its capabilities make it suitable for prototyping, small production runs, and intricate designs.

5. Is the FSL Muse 3D Autofocus Desktop CO2 Laser Cutter suitable for beginners?

Yes, the FSL Muse 3D Autofocus Desktop CO2 Laser Cutter is beginner-friendly. Its user-friendly interface and intuitive software make it easy for beginners to create and execute designs. Additionally, the machine's safety features ensure that users can operate it with peace of mind.

Conclusion:

The FSL Muse 3D Autofocus Desktop CO2 Laser Cutter is a powerful and versatile tool that offers precise cutting and engraving capabilities. Its ease of use, compact design, and safety features make it suitable for beginners and professionals alike. Whether you want to unleash your creativity or enhance your small-scale production, this laser cutter can take your projects to the next level.