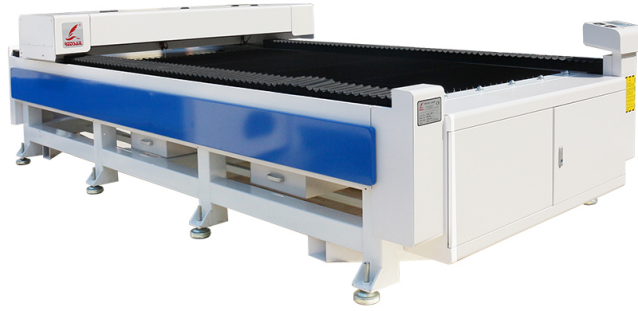
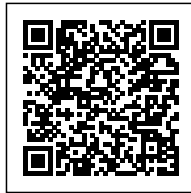


THE VERSATILITY OF A 50W CO2 LASER CUTTING MACHINE

Posted on 2023-10-11 by redsail



Category: [Laser Cutter News](#)
Tag: [co2 laser cutting machine 50w](#)



THE VERSATILITY OF A 50W CO2 LASER CUTTING MACHINE

Laser cutting machines are becoming increasingly popular in the manufacturing industry due to their ability to cut a variety of materials with precision and accuracy. One of the most popular types of laser cutting machines is the 50W CO2 laser cutting machine. This type of machine is capable of cutting a wide range of materials, including wood, acrylic, paper, and even metal. In this article, we will discuss the versatility of a 50W CO2 laser cutting machine and how it can be used in various applications.

What is a 50W CO2 Laser Cutting Machine?

A 50W CO2 laser cutting machine is a type of laser cutting machine that uses a 50-watt carbon dioxide laser to cut materials. The laser beam is focused on the material, which is then vaporized or melted away. This type of machine is capable of cutting a variety of materials, including wood, acrylic, paper, and even metal. The 50W CO2 laser cutting machine is a versatile tool that can be used for a variety of applications, from prototyping to production.

Advantages of a 50W CO2 Laser Cutting Machine

The 50W CO2 laser cutting machine offers a number of advantages over other types of laser cutting machines. One of the main advantages is its ability to cut a variety of materials with precision and accuracy. The laser beam is focused on the material, which is then vaporized or melted away. This allows for precise cuts with minimal waste. Additionally, the 50W CO2 laser cutting machine is capable of cutting intricate shapes and designs with ease. This makes it ideal for prototyping and production applications.

Another advantage of the 50W CO2 laser cutting machine is its speed. The laser beam is able to cut through materials quickly and efficiently, allowing for faster production times. Additionally, the 50W CO2 laser cutting machine is relatively easy to operate and maintain. This makes it a great choice for businesses that need to produce a large number of parts in a short amount of time.

Applications of a 50W CO2 Laser Cutting Machine

The 50W CO2 laser cutting machine is a versatile tool that can be used for a variety of applications. It is commonly used in the manufacturing industry for prototyping and production applications. The machine is capable of cutting a variety of materials, including wood, acrylic, paper, and even metal. Additionally, the 50W CO2 laser cutting machine is capable of cutting intricate shapes and designs with ease. This makes it ideal for creating custom parts and prototypes.

The 50W CO2 laser cutting machine is also commonly used in the arts and crafts industry. The machine is capable of cutting intricate shapes and designs with ease, making it ideal for creating custom artwork. Additionally, the 50W CO2 laser cutting machine is capable of cutting a variety of materials, including wood, acrylic, paper, and even metal. This makes it a great choice for creating custom jewelry, sculptures, and other art pieces.

Conclusion

The 50W CO2 laser cutting machine is a versatile tool that can be used for a variety of applications. It is capable of cutting a variety of materials with precision and accuracy, making it ideal for prototyping and production applications. Additionally, the 50W CO2 laser cutting machine is capable of cutting intricate shapes and designs with ease, making it a great choice for creating custom parts and artwork.

FAQs

What is a 50W CO2 laser cutting machine?

A 50W CO2 laser cutting machine is a type of laser cutting machine that uses a 50-watt carbon dioxide laser to cut materials. The laser beam is focused on the material, which is then vaporized or melted away. This type of machine is capable of cutting a variety of materials, including wood, acrylic, paper, and even metal.

What are the advantages of a 50W CO2 laser cutting machine?

The 50W CO2 laser cutting machine offers a number of advantages over other types of laser cutting machines. One of the main advantages is its ability to cut a variety of materials with precision and accuracy. Additionally, the 50W CO2 laser cutting machine is capable of cutting intricate shapes and designs with ease, making it ideal for prototyping and production applications. Additionally, the 50W CO2 laser cutting machine is relatively easy to operate and maintain.

What are the applications of a 50W CO2 laser cutting machine?

The 50W CO2 laser cutting machine is a versatile tool that can be used for a variety of applications. It is commonly used in the manufacturing industry for prototyping and production applications. Additionally, the 50W CO2 laser cutting machine is commonly used in the arts and crafts industry for creating custom artwork and jewelry.