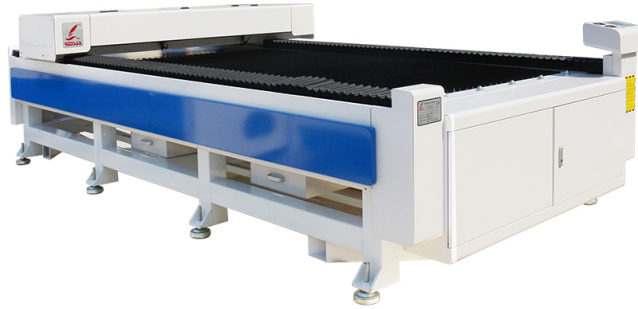


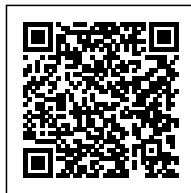
SAFETY CONSIDERATIONS FOR 50W CO2 LASER CUTTERS

Posted on 2023-10-11 by redsail



Category: [Laser Cutter News](#)

Tag: [50w co2 laser cutter](#)



SAFETY CONSIDERATIONS FOR 50W CO2 LASER CUTTERS

Laser cutting is a popular manufacturing process used to cut materials such as wood, plastic, and metal. It is a precise and efficient way to create intricate shapes and designs. However, it is important to understand the safety considerations associated with laser cutting, especially when using a 50W CO2 laser cutter. This article will discuss the safety considerations for 50W CO2 laser cutters, including the potential hazards, safety equipment, and safety protocols.

Potential Hazards

The most common hazard associated with laser cutting is the risk of eye injury. The laser beam used in the cutting process is highly concentrated and can cause serious damage to the eyes if not properly protected. Additionally, the laser beam can cause burns to the skin if it comes into contact with it. The laser beam can also cause fires if it comes into contact with flammable materials.

Safety Equipment

When using a 50W CO2 laser cutter, it is important to use the proper safety equipment. This includes safety glasses or goggles to protect the eyes from the laser beam, as well as protective clothing to protect the skin from burns. Additionally, it is important to have a fire extinguisher on hand in case of a fire.

Safety Protocols

In addition to using the proper safety equipment, it is important to follow safety protocols when using a 50W CO2 laser cutter. This includes ensuring that the area is well-ventilated to reduce the risk of fire and smoke inhalation. Additionally, it is important to keep flammable materials away from the laser beam and to avoid wearing loose clothing or jewelry that could get caught in the machine.

Maintenance

It is also important to regularly maintain the laser cutter to ensure it is in proper working order. This includes checking the laser beam for any signs of damage or wear and tear, as well as cleaning the machine to remove any dust or debris. Additionally, it is important to check the safety equipment to ensure it is in good condition and replace any worn or damaged parts.

FAQs

What are the safety considerations for 50W CO2 laser cutters?

The safety considerations for 50W CO2 laser cutters include the potential hazards, safety equipment, safety protocols, and regular maintenance.

What safety equipment should be used when using a 50W CO2 laser cutter?

When using a 50W CO2 laser cutter, it is important to use safety glasses or goggles to protect the eyes from the laser beam, as well as protective clothing to protect the skin from burns. Additionally, it is important to have a fire extinguisher on hand in case of a fire.

What safety protocols should be followed when using a 50W CO2 laser cutter?

When using a 50W CO2 laser cutter, it is important to ensure that the area is well-ventilated to reduce the risk of fire and smoke inhalation. Additionally, it is important to keep flammable materials away from the laser beam and to avoid wearing loose clothing or jewelry that could get caught in the machine.