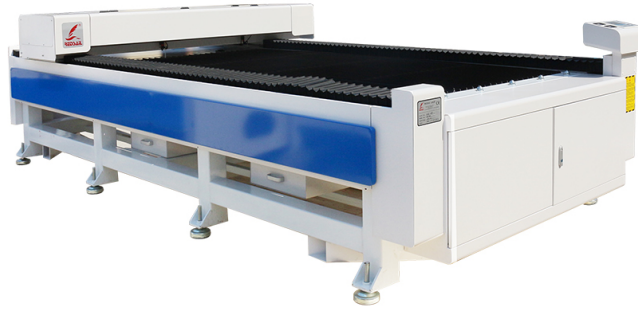
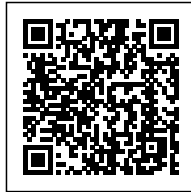


REASONS FOR POOR POWER OF LASER CUTTING MACHINE

Posted on 2023-08-25 by redsail



Category: [Laser Cutter News](#)



Laser cutting must rely on related equipment to complete. If the power of the equipment is not good, it will directly affect the cutting efficiency. What factors will cause poor laser cutting design efficiency? We need further analysis before we can draw a conclusion. After repeated inspections, tests, and analysis, it was found that the reasons for the poor power of the laser cutting machine are nothing more than the following points, including:

1. The bearings of the equipment are aging or have defects, which will affect its power output. It is best to replace them with new ones.
2. The internal and external air pressure of the equipment parts is very different, so the internal pressure can be filled to reduce the possibility of pressure difference.
3. Too much air humidity will also become one of the reasons for the poor power of the laser cutting machine. Relevant equipment can be used to adjust the ambient humidity to meet the requirements.