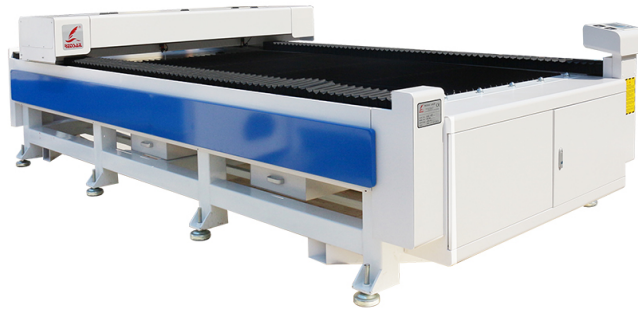


IS THE ZBAITU LASER ENGRAVER THE PERFECT TOOL FOR PRECISION ENGRAVING?

Posted on 2024-08-29 by redsail



Category: [Laser Engraver News](#)



IS THE ZBAITU LASER ENGRAVER THE PERFECT TOOL FOR PRECISION ENGRAVING?

In the world of precision engraving, finding the perfect tool is essential. The Zbaitu Laser Engraver has gained immense popularity among professionals and hobbyists alike. With its advanced features and versatile capabilities, it promises to deliver exceptional results. But is it really the perfect tool for precision engraving? Let's delve deeper and find out.

Unparalleled Precision and Accuracy

When it comes to precision engraving, accuracy is paramount. The Zbaitu Laser Engraver boasts exceptional precision, ensuring that every detail of your design is etched flawlessly. Its high-powered laser can engrave even the tiniest lines and intricate patterns with sharpness and clarity. Whether you are engraving on wood, acrylic, leather, or metal, this machine consistently delivers accurate results, making it ideal for intricate projects.

With its fine-tuned laser beam, the Zbaitu Laser Engraver ensures perfect engraving every time.

Versatility and Ease of Use

One of the highlights of the Zbaitu Laser Engraver is its versatility. This machine supports a wide range of materials, allowing you to experiment and explore various engraving possibilities. From personalized gifts to detailed architectural models, the Zbaitu Laser Engraver handles it all with ease.

In addition to its versatility, this engraving tool is designed to be user-friendly. Its intuitive control panel and software make it accessible even to beginners. You can easily adjust the settings, import designs, and monitor the engraving process in real-time. This makes the Zbaitu Laser Engraver the perfect tool for both professionals and hobbyists looking for a hassle-free engraving experience.

- **Wide range of materials:** The Zbaitu Laser Engraver supports wood, acrylic, leather, metal, and more.
- **Intuitive control panel and software:** Easily adjust settings, import designs, and monitor the engraving process.

Durability and Longevity

Investing in a laser engraver is a significant decision, and durability is a crucial factor to consider. The Zbaitu Laser Engraver is constructed with high-quality materials that ensure its longevity. With proper care and maintenance, this machine can serve you for years, making it a sound investment for professionals who require a reliable engraving tool.

The Zbaitu Laser Engraver's robust build guarantees long-lasting performance.

Frequently Asked Questions (FAQs)

1. Can the Zbaitu Laser Engraver engrave images with various shades of gray?

Yes, the Zbaitu Laser Engraver supports grayscale engraving. This means it can engrave images that have different shades of gray, giving depth and detail to your artwork.

2. Does the Zbaitu Laser Engraver come with safety features?

Yes, the Zbaitu Laser Engraver prioritizes user safety. It comes equipped with safety features such as a protective enclosure, emergency stop button, and an automatic shutdown system. These features ensure that the engraving process is safe and secure.

3. Can I connect the Zbaitu Laser Engraver to my computer?

Absolutely! The Zbaitu Laser Engraver can be easily connected to your computer via USB. It is compatible with various design software, allowing you to effortlessly transfer and engrave your creations.

With its unmatched precision, versatility, and durability, the Zbaitu Laser Engraver emerges as a leading choice for those seeking the perfect tool for precision engraving. Whether you are a professional or a hobbyist, this machine promises to elevate your engraving projects to new heights.