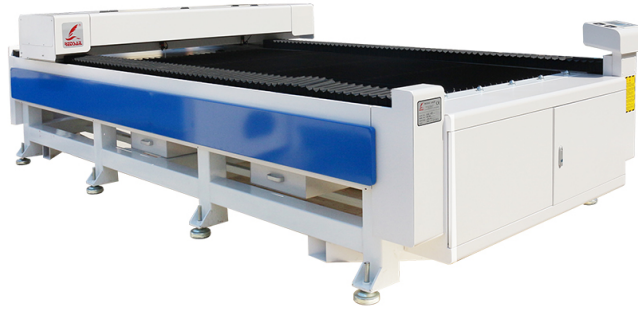
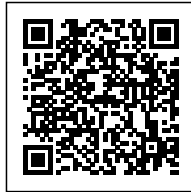


HOW TO CLEAN FIBER LASER CUTTING MACHINE

Posted on 2023-08-30 by redsail



Category: [Laser Cutter News](#)



Generally, the [metal fiber laser cutting machine](#) is very clean. Because the inside of the cutting area is provided with a rectangular tube, the top of the rectangular tube is provided with teeth. The cutting area in the rectangular tube is provided with a chip removal hole, and the cutting area is provided with a storage cavity. External type, the top of the water storage chamber is connected with the water inlet pipe, the water inlet pipe is provided with a water inlet valve, the bottom of the liquid storage chamber is connected with the drain pipe, and the drain pipe is provided with a discharge valve, and an electric fan is installed in the liquid storage chamber, and the electric fan is located below at the chip removal hole. It can conveniently pump out the gasified solids to ensure the normal operation of the equipment. The electric fan can suck the vaporized solid in the chip discharge hole, and then contact with the water in the storage chamber to solidify the gasified material. The extrusion pipe squeezes the waste water, and the new water is injected into the water storage chamber through the water inlet pipe to ensure normal use.

An easy-to-clean flat fiber laser cutting machine, equipped with pads, top plate, bottom plate, two sets of side plates and gun body; also equipped with support table, cleaning box and discharge pipe, cleaning room is provided in the cleaning box, cleaning box The top is connected with the air inlet, and the feed port is screwed on the feed port with a plug. The input end of the discharge pipe is connected with a discharge pump, a connecting pipe and a connecting hose, an adjusting spring group and a fixed ring, which are located on the fixed ring. It is equipped with notches, it also accommodates the tube and removes the tube. The outside of the removal tube is fitted with a sponge wiper. It also has an auxiliary vibration spring, an auxiliary vibration plate and a waterproof oscillator. The waterproof vibrator has its own power module, two sets of continuous rods, hand-held plates, and scrapers are provided with slide rails on the left and right sides of the block top. The slide rails slide on two sets of slide rails without sliders. It also includes a telescoping tube set and a spring set.

In the discharge mechanism of the fiber laser cutting machine, a discharge hopper is fixed on the top of the bottom plate, and two push rods are fixed on the inner bottom wall of the discharge hopper. The top remains constant with the carrier board. The output mechanism of the fiber laser cutting machine is equipped with a telescopic rod on the lifting push rod. When the user uses the equipment, the user arranges the garbage in the discharge hopper, turns on the ash collecting air pump, and the ash collecting air pump pumps out the metal powder when it enters the filter box, the atmospheric filter holes are squeezed out, and the powder remains in the filter box. But when the user picks up a large piece of metal scrap, the lifting push rod is turned on, and the carrier plate rises, so that the user can easily take the garbage away without pulling the garbage in. This kind of waste relieves the user's troubles and facilitates the user's access to materials.