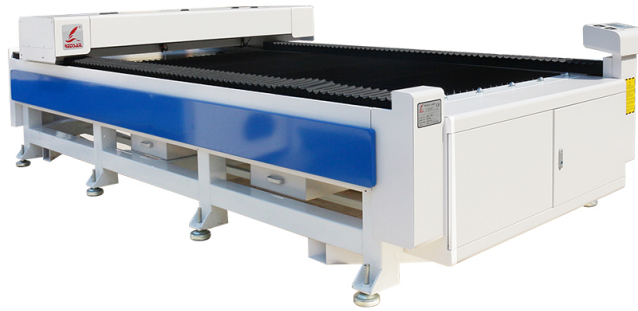


# CO2 LASER CUTTING MACHINE 1390: THE CUTTING-EDGE SOLUTION FOR PRECISION CRAFTING?

*Posted on 2023-11-09 by redsail*



Category: [Laser Cutter News](#)



# **CO2 LASER CUTTING MACHINE 1390: THE CUTTING-EDGE SOLUTION FOR PRECISION CRAFTING?**

## **Introduction**

When it comes to precision crafting and intricate designs, the CO2 laser cutting machine 1390 stands as a cutting-edge solution. With its advanced technology and versatile capabilities, it has revolutionized various industries including arts, crafts, manufacturing, and prototyping. This article aims to explore the key features, benefits, and applications of the CO2 laser cutting machine 1390.

## **Key Features**

The CO2 laser cutting machine 1390 boasts a range of impressive features that set it apart from traditional cutting tools:

### **Precision and Accuracy**

Equipped with a CO2 laser beam, this machine offers unmatched precision and accuracy. It ensures clean cuts, smooth edges, and intricate details even on the most delicate materials.

### **Versatility**

The CO2 laser cutting machine 1390 is suitable for a wide range of materials, including wood, acrylic, leather, fabric, paper, and more. Its versatility makes it an ideal choice for many industries.

### **Speed and Efficiency**

With its high-powered laser, the CO2 laser cutting machine 1390 can cut through materials at a rapid pace. It ensures efficient production and reduces manufacturing time significantly.

### **User-Friendly Interface**

Operating the CO2 laser cutting machine 1390 is hassle-free, thanks to its user-friendly interface. The machine comes with intuitive software that allows easy design modifications and precise control over the cutting process.

# Benefits

## Precision Crafting

One of the main advantages of the CO2 laser cutting machine 1390 is its ability to create precise and intricate designs. Whether it's custom signage, delicate jewelry pieces, or detailed art designs, this machine can handle it all with exceptional accuracy.

## Time and Cost Savings

Compared to traditional cutting methods, the CO2 laser cutting machine 1390 streamlines the production process, saving both time and costs. It eliminates the need for manual cutting, reducing labor requirements and enabling quicker project completion.

## Wide Range of Applications

The versatility of the CO2 laser cutting machine 1390 allows for a wide range of applications across various industries. From architectural models and signage to customized gifts and prototypes, this machine has endless possibilities.

## Less Material Wastage

The precision of the CO2 laser cutting machine 1390 minimizes material wastage, making it an environmentally friendly choice. Its efficient cutting process ensures maximum utilization of materials, reducing the overall carbon footprint.

## Applications

The CO2 laser cutting machine 1390 finds application in numerous industries and professions:

- Arts and Crafts: Create intricate designs on various materials such as wood, paper, and fabric.
  - Architecture: Produce architectural and scale models with precise detailing.
- Manufacturing: Cut and shape materials for parts, prototypes, and finished products.
  - Jewelry: Craft intricate patterns and designs on metals and precious stones.
  - Signage: Design and manufacture custom signs for businesses and events.

## FAQs

## **Q: Is the CO2 laser cutting machine 1390 suitable for beginners?**

A: Yes, the machine's user-friendly interface and intuitive software make it suitable for beginners who are new to laser cutting technology.

## **Q: Can the CO2 laser cutting machine 1390 cut through thick materials?**

A: Yes, the machine's power output can be adjusted to cut through various thicknesses of materials, including thick acrylic and wood.

## **Q: Is the CO2 laser safe to use?**

A: CO2 lasers used in cutting machines are generally safe to use. However, proper safety precautions and training are necessary to avoid accidents.

## **Q: How much maintenance does the CO2 laser cutting machine 1390 require?**

A: Regular cleaning and alignment checks are necessary to ensure optimal performance. The specific maintenance requirements may vary depending on usage and manufacturer guidelines.

## **Q: Can the CO2 laser cutting machine 1390 work with vector-based files?**

A: Yes, the machine is compatible with vector-based design files, allowing for precise and accurate cutting paths.

## **Conclusion**

The CO2 laser cutting machine 1390 is undoubtedly a cutting-edge solution for precision crafting. With its advanced features, versatility, and range of applications, it has become an essential tool for various industries. Whether you're a hobbyist or a professional craftsman, this machine empowers you to unleash your creativity and bring your design ideas to life.